

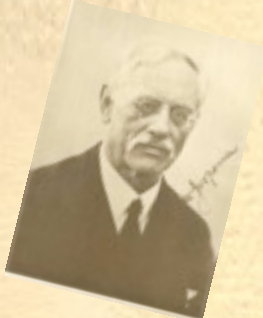
## SORBONNE NOUVELLE UNIVERSITY GRADUATE LINGUISTICS SYMPOSIUM

— APRIL 9TH 2010 —

SORBONNE NOUVELLE, INSTITUT DU MONDE ANGLOPHONE, GRAND AMPHI

### PROGRAM

- 09.15 Greetings from SNUGLS, Aliyah Morgenstern
- 09.30 Mathilde Pinson *"What is the place of the conjunction LIKE in the grammar of English?"*
- 10.00 Yann Fuchs *"SAY, GO, BE-LIKE: Quotatives in interaction in conversational British English."*
- 10.30 Camille Debras *"Framing the issue: Climate change and the environment in 2009 Copenhagen Summit speeches."*
- 11.00 COFFEE BREAK (Room 12)
- 11.30 COACHING + LUNCH (Room 12)
- 13.00 Coralie Hervé *"The influence of parents' discourse strategies on bilingual children."*
- 13.30 Julia Mota *"A comparative analysis on the semantics of a few phrasal verbs in American and British English."*
- 14.00 Tizana Bignasca, Cristina Corlateanu, Christine Da Silva, Somayeh Rahmati & Stefano Rezzonico *"How to analyze the way that children with Specific Language Impairment respond in dialogue."*
- 14.30 COACHING + DESSERT
- 15.00 Stephanie Caet *"Development of self-reference in two English-speaking children between 1 and 3 years."*
- 15.30 Emily Dilling *"Differentiating forms of Bilingual First Language Acquisition language mixing."*
- 16.00 Vincent Hugou *"Strings of creations vs. strings of well-established, attested forms."*
- 16.30 COACHING + COFFEE BREAK
- 17.00 Simon Harrison (plenary lecture) "How do students at Paris 3 gesture?"**
- 18.00 Best Paper Award ceremony and goodbye from SNUGLS, Aliyah Morgenstern



JESPERSEN



ENTZINGER



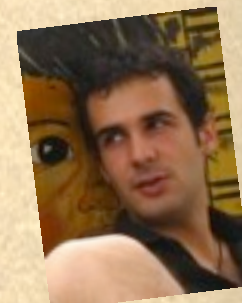
HUGOU



CLARK



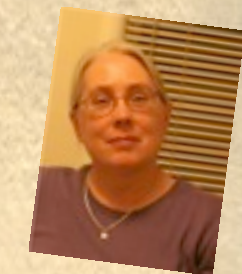
FOUCAULT



MELAC



LAKOFF



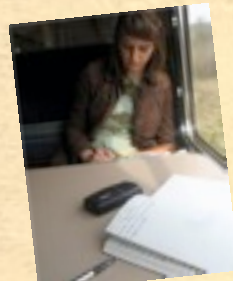
SWEETSER



SAUSSURE



BENVENISTE



DILLING



CHOMSKY



CAET



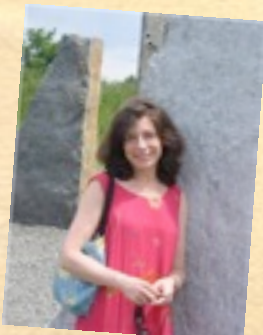
JAKOBSON



FUCHS



KENDON



GOLDBERG



HERVÉ

